

Appendix 14 – Least Constrained Parcels

- Figure 9.1: Coventry
- Figure 9.2: Kenilworth
- Figure 9.3: Nuneaton and Bedworth
- Figure 9.4: Warwick and Leamington
- Figure 9.5: Whole Study Area

For Nuneaton & Bedworth see figure 9.3

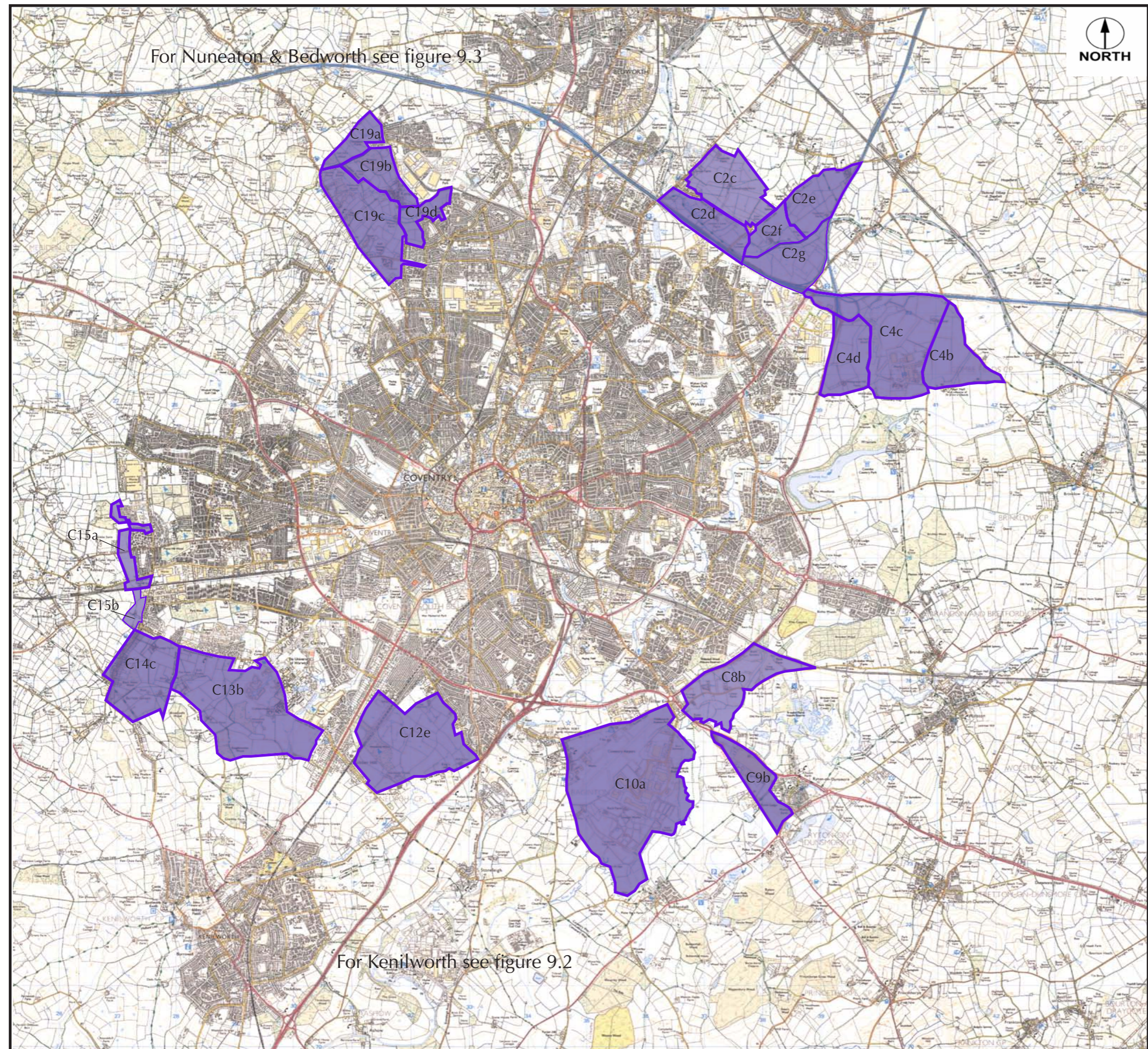


COVENTRY

Least Constrained Parcels

LEGEND

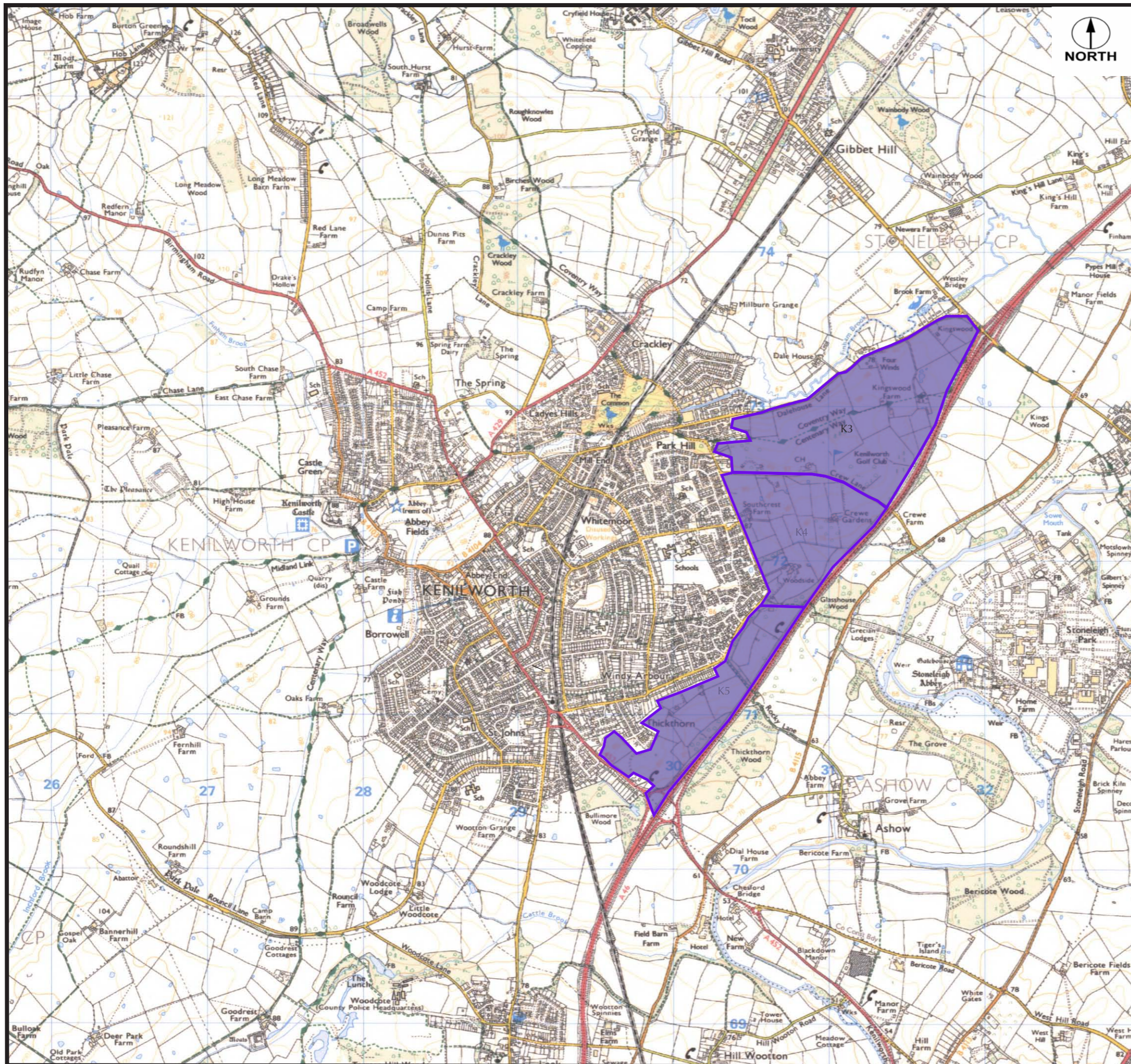
 - Least Constrained Parcels



For Kenilworth see figure 9.2

Figure 9.1

Reproduced from the Ordnance Survey map by permission of Ordnance Survey on behalf of The Controller of Her Majesty's Stationery Office, © Crown Copyright. Licence No. 100012747. FOR IDENTIFICATION PURPOSES ONLY.



KENILWORTH

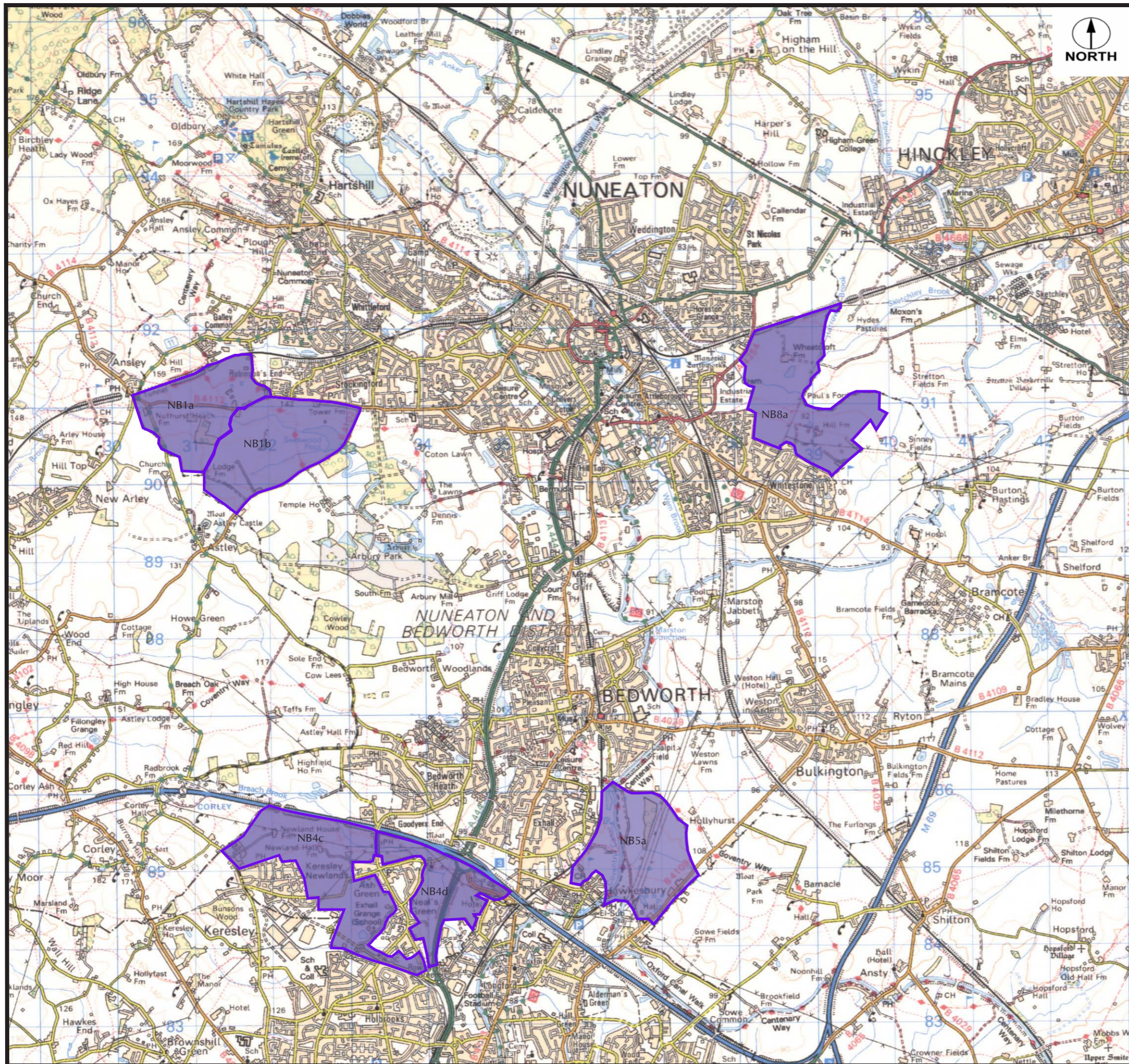
Least Constrained Parcels

LEGEND

- Least Constrained Parcels

Figure 9.2

Reproduced from the Ordnance Survey map by permission of Ordnance Survey on behalf of The Controller of Her Majesty's Stationery Office, © Crown Copyright. Licence No. 100012747. FOR IDENTIFICATION PURPOSES ONLY.



NUNEATON & BEDWORTH

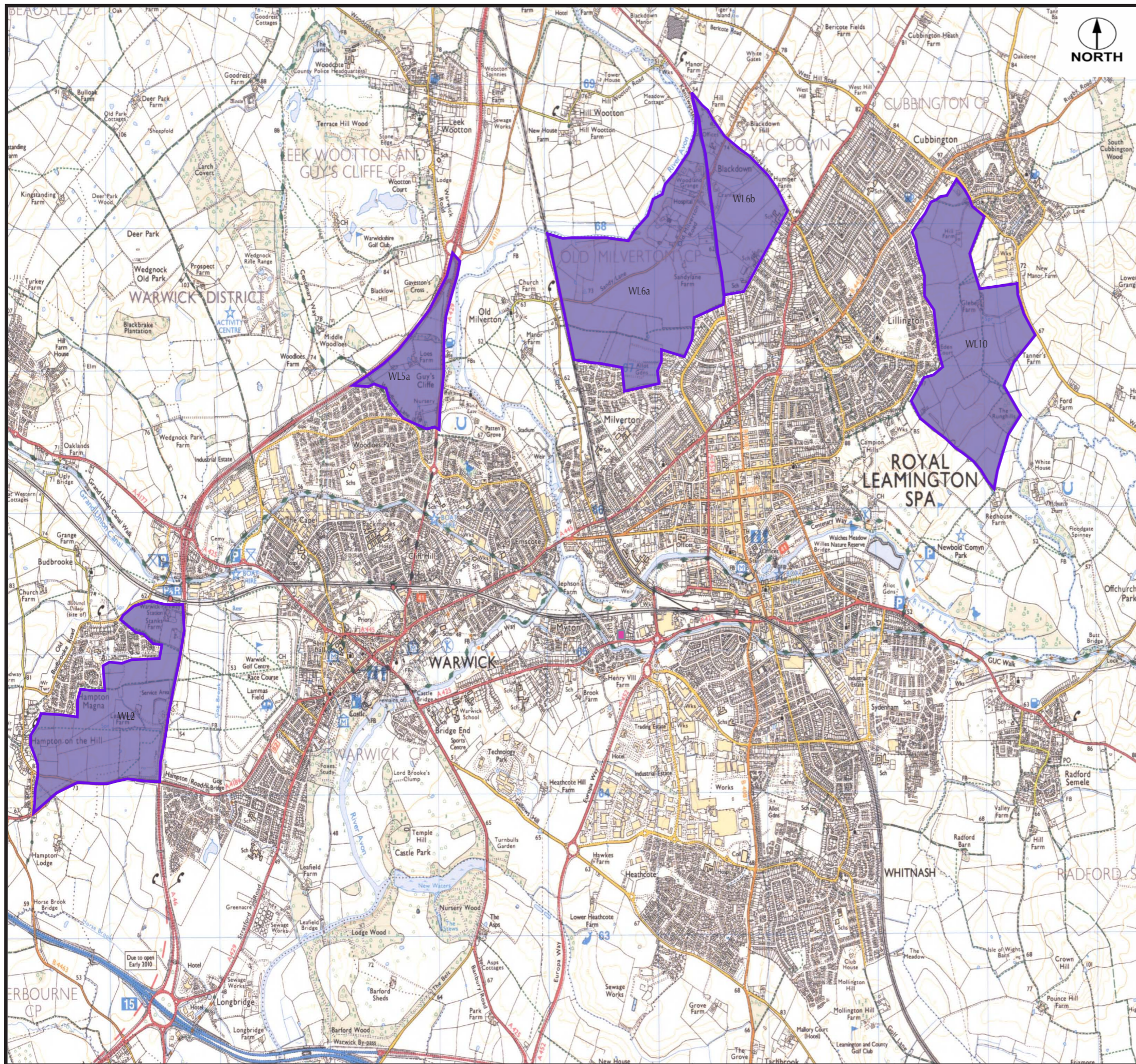
Least Constrained Parcels

LEGEND

 - Least Constrained Parcels

Figure 9.3

Reproduced from the Ordnance Survey map by permission of Ordnance Survey on behalf of The Controller of Her Majesty's Stationery Office, © Crown Copyright. Licence No. 100012747. FOR IDENTIFICATION PURPOSES ONLY.



WARWICK & LEAMINGTON SPA

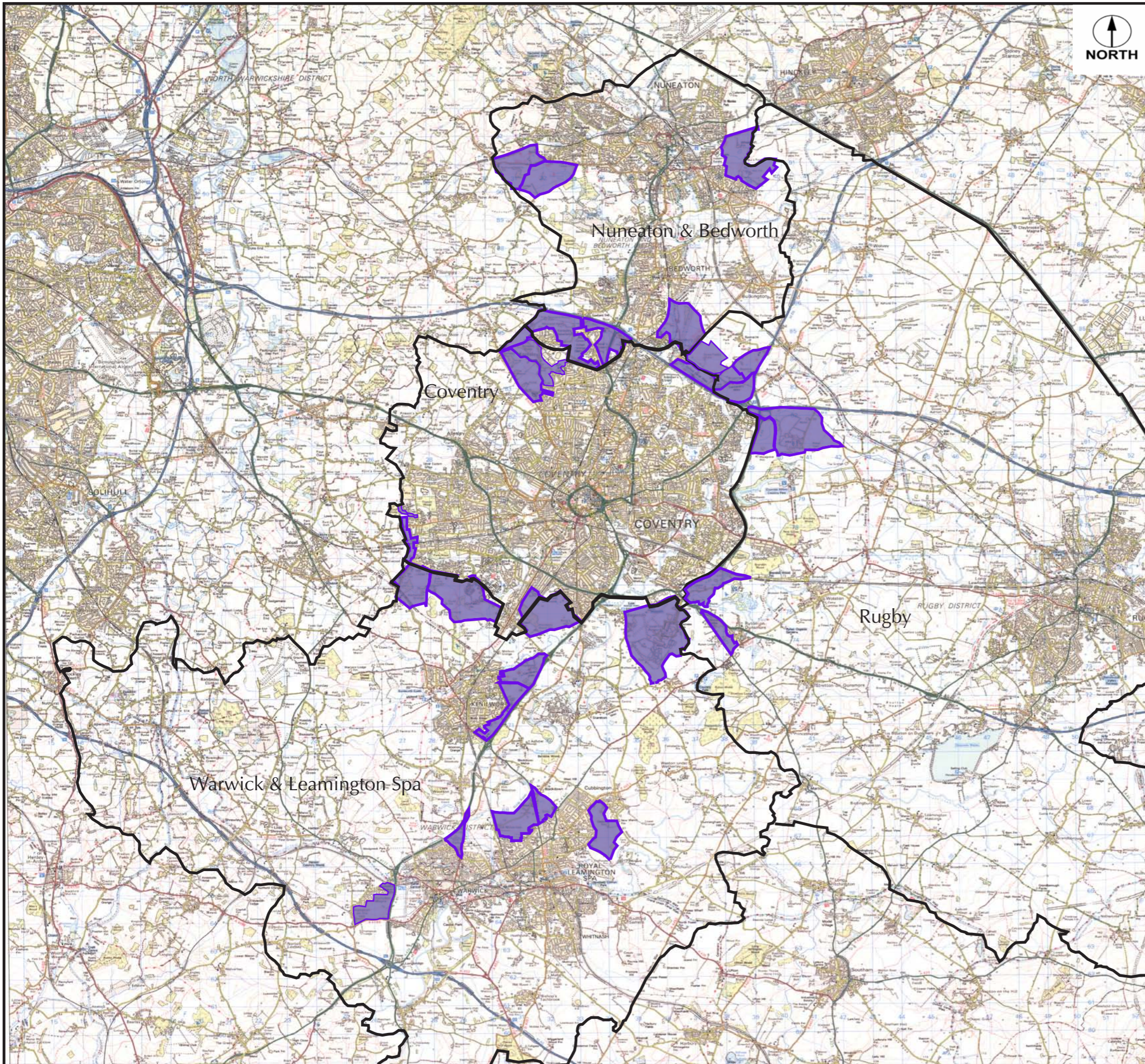
Least Constrained Parcels

LEGEND

 - Least Constrained Parcels

Figure 9.4

Reproduced from the Ordnance Survey map by permission of Ordnance Survey on behalf of The Controller of Her Majesty's Stationery Office, © Crown Copyright. Licence No. 100012747. FOR IDENTIFICATION PURPOSES ONLY.



Regional Context

Least Constrained Parcels

LEGEND

 - Least Constrained Parcels

Figure 9.5

Reproduced from the Ordnance Survey map by permission of Ordnance Survey on behalf of The Controller of Her Majesty's Stationery Office, © Crown Copyright. Licence No. 100012747. FOR IDENTIFICATION PURPOSES ONLY.