

## SONNEBORN & RIECK - 2001 PURCHASED PAINT USAGE

PART No.	TYPE	USE	Density	VOC kg/l	Jan	Feb	March	Compliance Method
01 60	thinner	cleaning	0.85	0.85		200	200	4
03 1 X3600	stain	pine sealer	0.846	0.809	50	116.5	149.1	3
04 18 C6978	matching stain	light/medium patina	0.813	0.701	18			2
04 30 102	matching stain	white patina	0.866	0.719	140	40	40	2
04 34 C6574	matching stain	brown patina	0.883	0.713	340	180	220	2
04 4 X2956	matching stain	cherry matching	0.863	0.811	1		107	2
04 8 6166	matching stain	oak patina	0.934	0.793	20			2
07 54 X4421	w/b stain	waterbourne alder	1.0211	0.0286	182	98	101	1
07 54 X4736	w/b stain	waterbourne chateau	1.0082	0.0232	200		102	1
09 09	thinner	thinner	0.88	0.88	150	75	50	4
40 3595/A	lacquer	semi matt topcoat	0.951	0.591	400	400	250	3
40 3597/A	lacquer	matt topcoat	0.955	0.588	325	450	66.8	3
40 3739/A	lacquer	dead matt waxy topcoat	0.959	0.584	300	215	250	3
40 AH-11	catalyst	catalyst	0.911	0.761	115	85	105	4
41 41 X4393/A	lacquer	limed oak tinted topcoat	0.968	0.594		50		3
41 41 X4420/A	lacquer	swiss pear tinted topcoat	0.963	0.591	100	50	50	3
501 213	thinner	thinner	0.731	0.731	35	40	20	4
97 191	w/b UV laquer	waterbourne UV topcoat	1.049	0.068	369	180		1
97 D46/100/1	w/b UV laquer	waterbourne UV topcoat	1.05	0.066		60	214	1

### Compliance Method Code

- 1 = compliant as applied
- 2 = compliant ref PG6/33 clause 20 allowance for matching colours.
- 3 = non-compliant topcoat stain.
- 4 = used as part of as applied lacquer or for cleaning.
- 5 = compliant ref PG6/33 clause 20 (1) f.

## BECKER ACROMA - 2001 PURCHASED PAINT USAGE


PART No.	TYPE	USE	Density	VOC kg/l	Jan	Feb	March	Compliance Method
DF2004-9001-C	basecoat	white basecoat	1.373	0.418	80	60		5
DF2004-9130	basecoat	cream basecoat	1.373	0.423	50	150	200	5
DH2010-90862-A	lacquer	shaker cream topcoat	1.167	0.465		150	150	3
DL2011-A	basecoat	basecoat	0.962	0.637	400	350	350	5
DL2022-A	basecoat	basecoat	1.004	0.537	100	250	100	5
DL2036-A	basecoat	basecoat	0.99	0.548	900	600	650	5
DM2052-0065-A	lacquer	semi gloss topcoat	0.944	0.559	750	650	400	3
DT2004-A	thinner	thinner	0.859	0.856	500	200	200	4
DV2001-C	catalyst	catalyst	0.842	0.701	120		60	4
DV2001-D	catalyst	catalyst	0.842	0.701	80	160	90	4
DV2006-C	catalyst	catalyst	0.883	0.713		45		4
EM2017-0920	w/p lacquer	waterbourne tinted topcoat	1.054	0.068	150		150	1
EM2017-1125	w/p lacquer	waterbourne tinted topcoat	1.055	0.067			50	1
NS2160-22100-A	stain	medium oak	0.886	0.851	100			3
NT2015-A	thinner	thinner	0.85	0.85	600	400	900	4
XS2160-01400-A	stain	light oak	0.84	0.832	70	40	50	3

### Compliance Method Code

- 1 = compliant as applied
- 2 = compliant ref PG6/33 clause 20 allowance for matching colours.
- 3 = non-compliant topcoat stain.
- 4 = used as part of as applied lacquer or for cleaning.
- 5 = compliant ref PG6/33 clause 20 (1) f.

# BURBIDGE PAINT STATUS AS OF 28-02-01

	14	15	17	18	21	41	42	60	67	70	81	89	91	93
BASE COAT														
STAIN						ongoing	ongoing		n/a	n/a	n/a	ongoing	n/a	n/a
PATINA					n/a	n/a			n/a	n/a	n/a	n/a	n/a	n/a
TOP COAT					backs only				trail with Beckers					

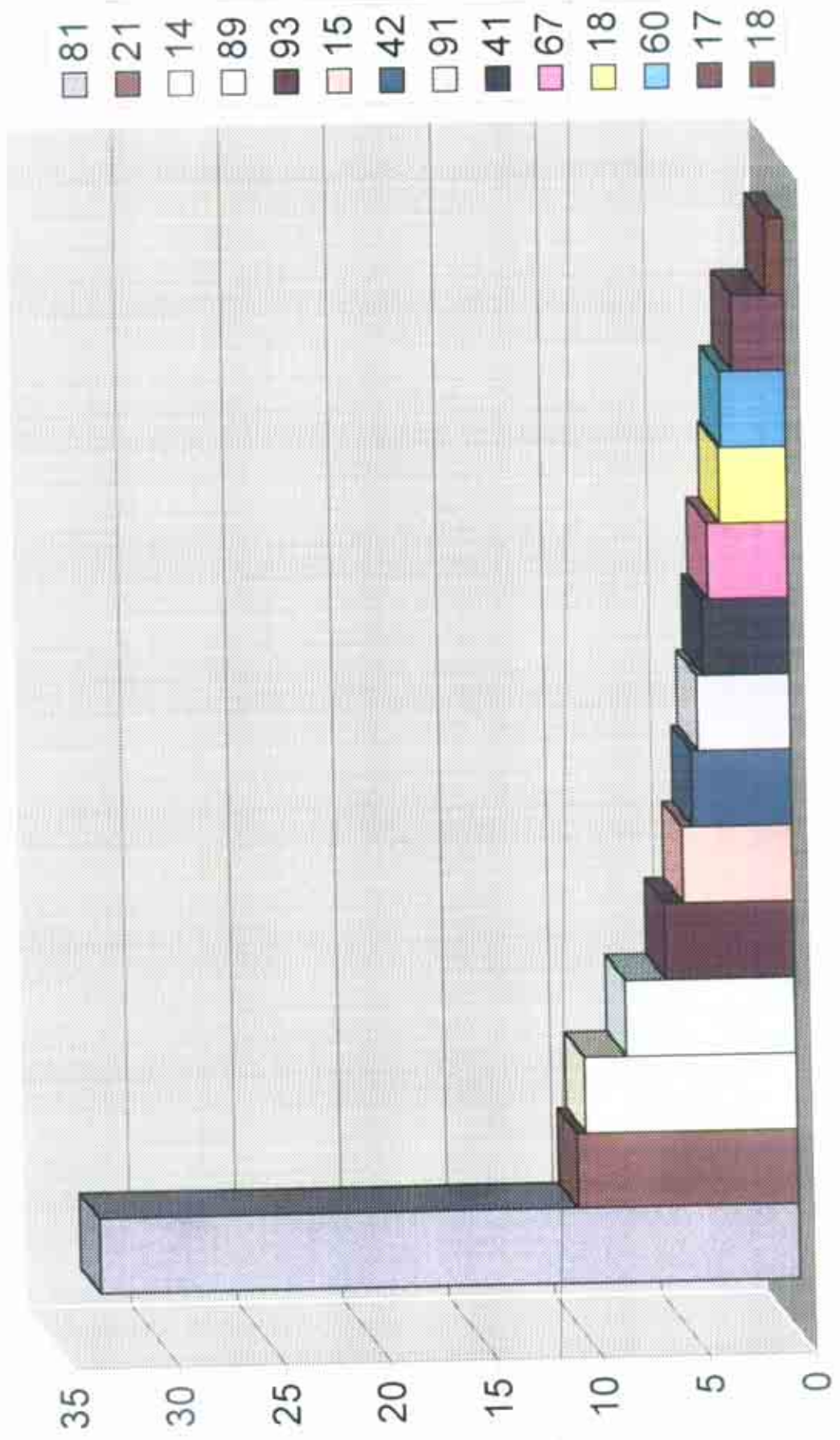
 WATER BASED

 CHANGING OVER TO WATER BASED

 SOLVENT BASED






PAINT FINISH % BASED ON WK01-WK08



# BURBIDGE PAINT STATUS AS OF 28-02-01

	14	15	17	18	21	41	42	60	67	70	81	89	91	93
BASE COAT														
STAIN						ongoing	ongoing		n/a	n/a	n/a	ongoing	n/a	n/a
PATINA					n/a	n/a			n/a	n/a	n/a	n/a	n/a	n/a
TOP COAT					backs only				trail with Beckers					

	WATER BASED
	CHANGING OVER TO WATER BASED
	SOLVENT BASED