

English – Year 10

Project work: Week 1 and 2

Either:

Create a time capsule documenting the Coronavirus

Your finished time capsule should inform people what the Coronavirus is; the impact of the virus around the world as well as at home in England. You should also document how the Coronavirus has impacted life for you personally; how you have needed to adapt; how life has changed.

file:///C:/Users/cvmau821/Downloads/2020_Covid_19_time_capsule_sheets_VS.pdf

Choose from a range of resources. Download and print off or copy from screen.

Extra ideas:

Create a visual representation of life during lockdown. Draw your own pictures or cut out images from newspapers/magazines.

Create a collage of the effects of the Coronavirus – use newspapers/ headlines. Remember to include positive things that are happening. The weekly ‘claps for the NHS’, PE with Joe Wicks, on line music concerts, quizzes, etc.

Write a blog persuading your peers to stay at home during lockdown.

First, remind yourself of the devices to use when writing to inform and persuade.

<https://www.bbc.co.uk/bitesize/topics/zv7fq3/articles/zr8cmfr>

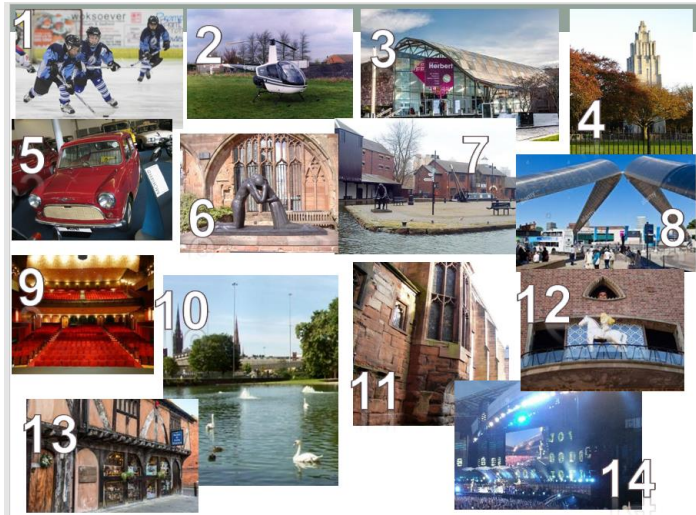
OR If you're bored of hearing about the Coronavirus –

Complete a project on Coventry.

Task 1: First, do some research on Coventry. Make a list and make notes of the different places to visit; do some research on the history; what famous people came from Coventry; how has Coventry changed throughout the years?

<https://www.visitcoventry.co.uk/> - This is a good place to start!

Task 2: can you name the following places? (One has been done for you).



- | | | |
|-----------------------------|---------------------------------|--------------------------------|
| | b. The Canal Basin | d. Herbert Art Gallery |
| a. Whittle Arch | c. Toy Museum | e. The Ricoh |
| 1 f. Skydome Arena | g. Belgrade Theatre | h. Peeping Tom and Lady Godiva |
| i. British Transport Museum | j. Coventry City Football Club | k. The New Cathedral |
| L. St.Mary's Hall | M. Swanswell park | O. Spon Street |
| N. Coventry airport | P. Priory Row (Georgian houses) | Q. The War Memorial park |

Task 3: So, what is there to do in Coventry for: Young children, families, elderly people, teenagers? Make a list for each category.

Task 4: Your task is to create an informative leaflet advertising what Coventry has to offer. You need to persuade a range of people to visit Coventry.

First, remind yourself of the devices to use when writing to persuade.

<https://www.bbc.co.uk/bitesize/topics/zv7fq3/articles/zr8cmfr>

Remember to include:

- An introduction summing up the fabulous range of things the City has to offer.
- Organise your ideas in short sections with sub-headings. For example:
- Why should people visit Coventry?
- Give some examples of what Coventry has to offer a mixed range of audience.
- Give some historical information – remember we are now a City of Culture – what does that mean?
- Include a ‘Did You Know?’ section.
- List famous people from Coventry or what Coventry was famous for in the past.
- Where is there to stay in Coventry? Where is there to eat? Etc.
- Make your leaflet as interesting and persuasive as possible.

Challenge: In addition to creating a time capsule or a leaflet. Imagine you are a presenter for BBC Newsround. Create a short video informing your audience either of the Coronavirus or what Coventry has to offer. You could hold interviews with family as part of your broadcast.

Remember to use formal language, introduce your topic and then give a range of relevant facts/details to inform your audience. Use a range of language devices; facts, statistics; emotive language, pronouns, etc to engage.

Week 3 and 4

Check your knowledge of language devices:

<https://wordwall.net/en-gb/community/poetic> - range of games to recap poetic devices. Just click on the one that stands out to you. Try a selection.

Log on to following links and follow the lesson for that day.

<https://www.bbc.co.uk/bitesize/articles/zn777nb> Reading for Meaning – ‘London’ (20th April)

<https://www.bbc.co.uk/bitesize/articles/zrkhp8> - How Poet’s create meaning (23rd April)