



Welcome to

Coventry's Draft Climate Change Strategy 2023-2030





Cllr Jim O'Boyle
**Cabinet Member for Jobs,
Regeneration and Climate Change**





Margot James
Chair of the
Coventry Climate Change Board





Professor Andy Gouldson
Co-Director of the Yorkshire
and Humber Climate Commission,
and Chair of the Leeds
Climate Commission





A Net-Zero Carbon Roadmap for Coventry

Andy Gouldson



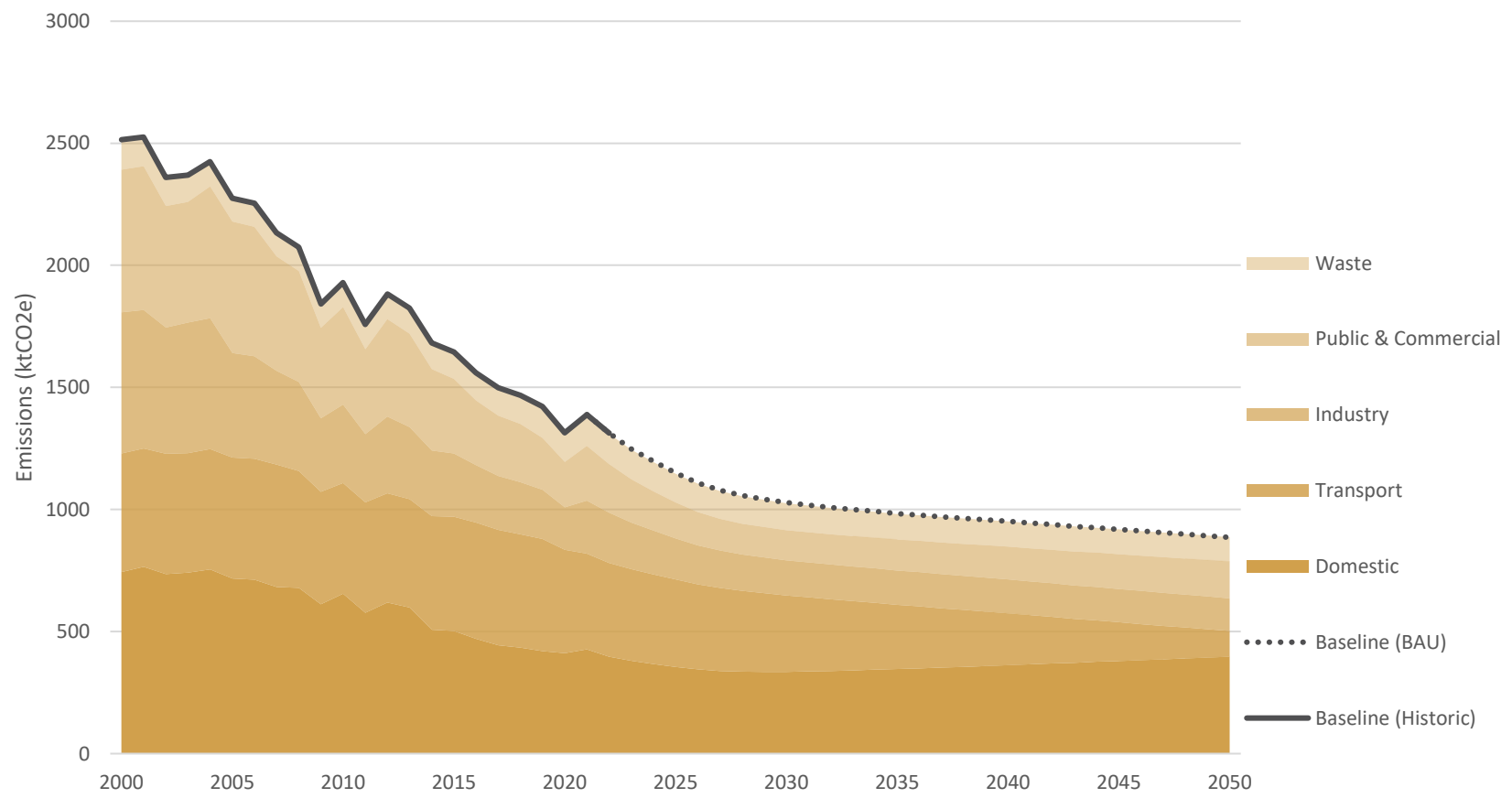


Highlights

- Coventry's total carbon emissions have fallen by 48% since 2000.
- Taking into account population growth, economic growth, technological change etc. this figure is expected to reach 65% by 2050.
- Of the remaining emissions in 2050, 2/3 can be mitigated by widely-available, commercially-tested low-carbon interventions
- Coventry as a whole currently spends £635m a year on energy – but adopting these measures would save the city £327m a year and create 29,000 years of employment in the city.

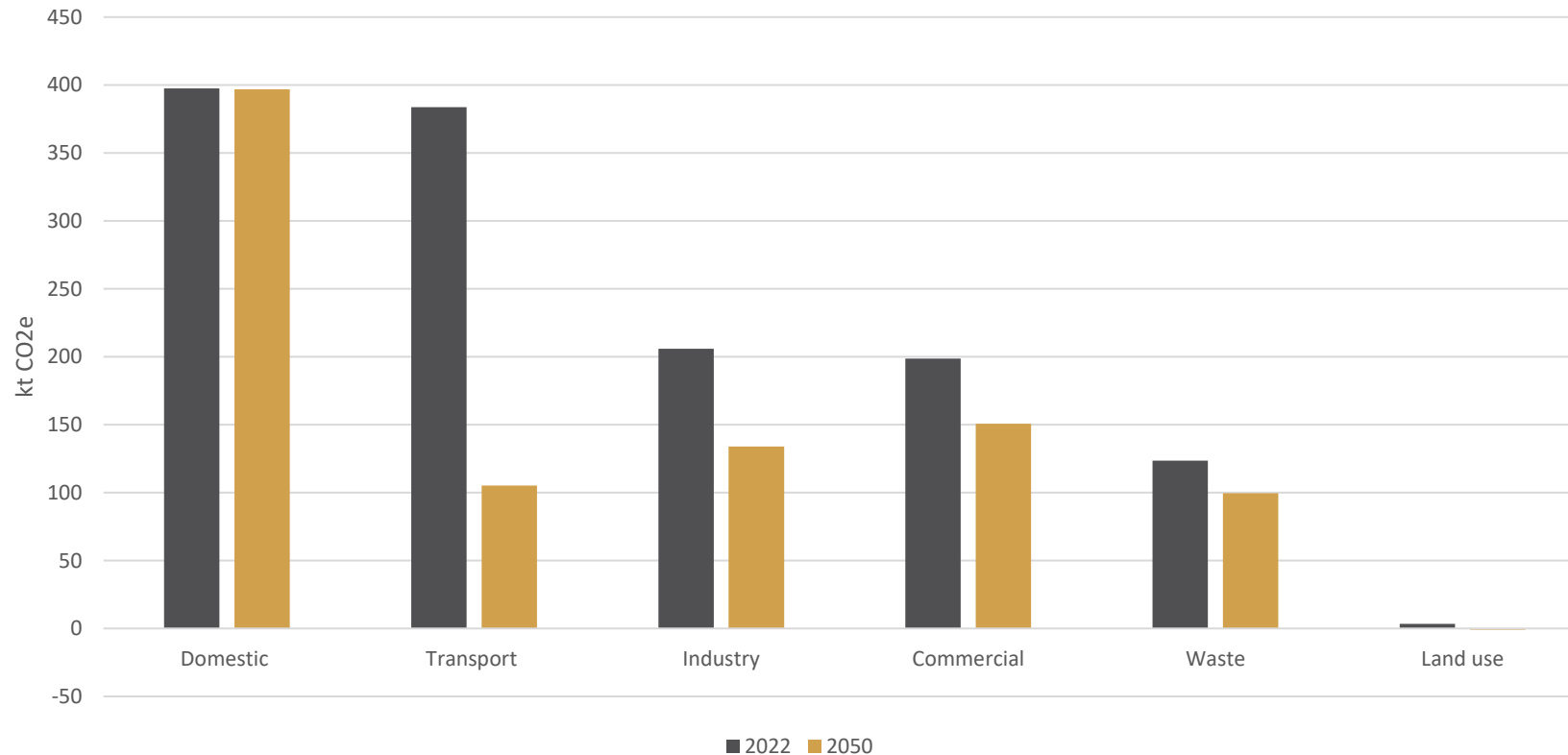


Coventry's Carbon Footprint Past, Present, Projected (Direct Emissions - Scope 1 and 2)



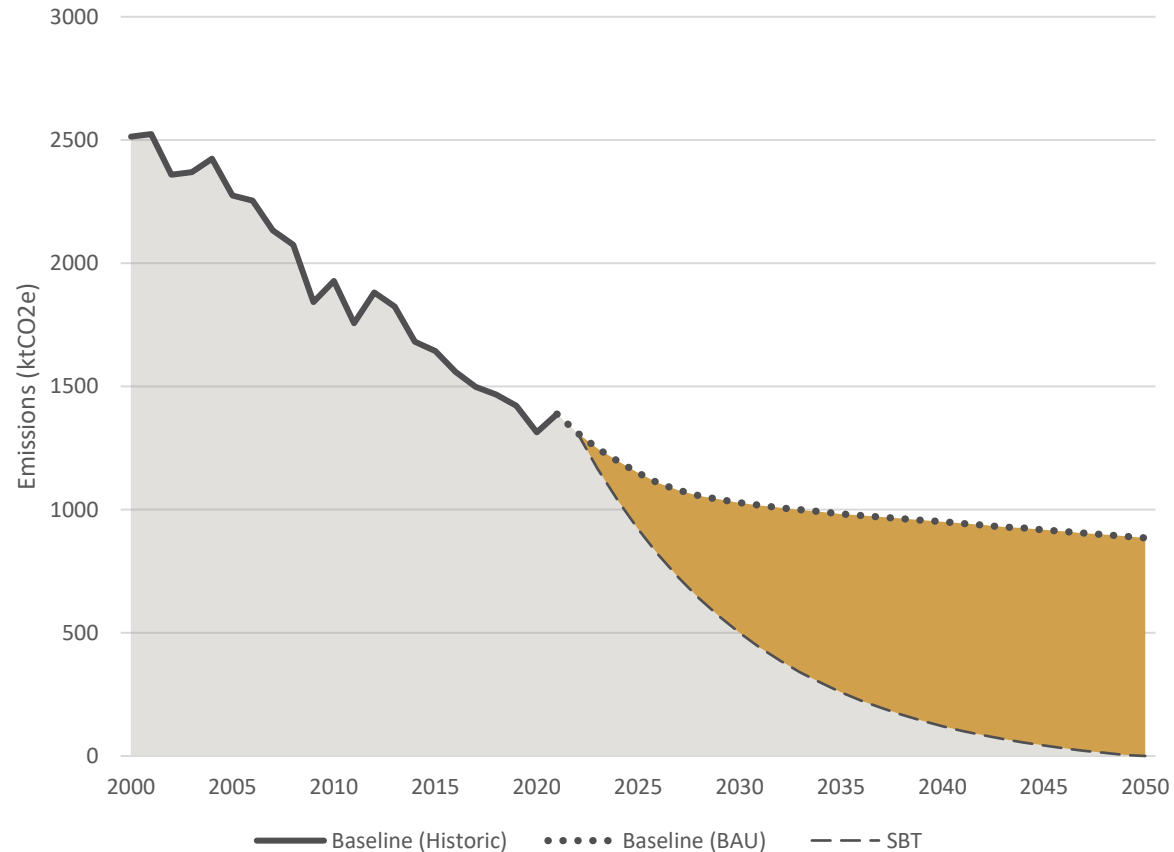


Coventry's Carbon Footprint Present and Projected Sectoral Emissions





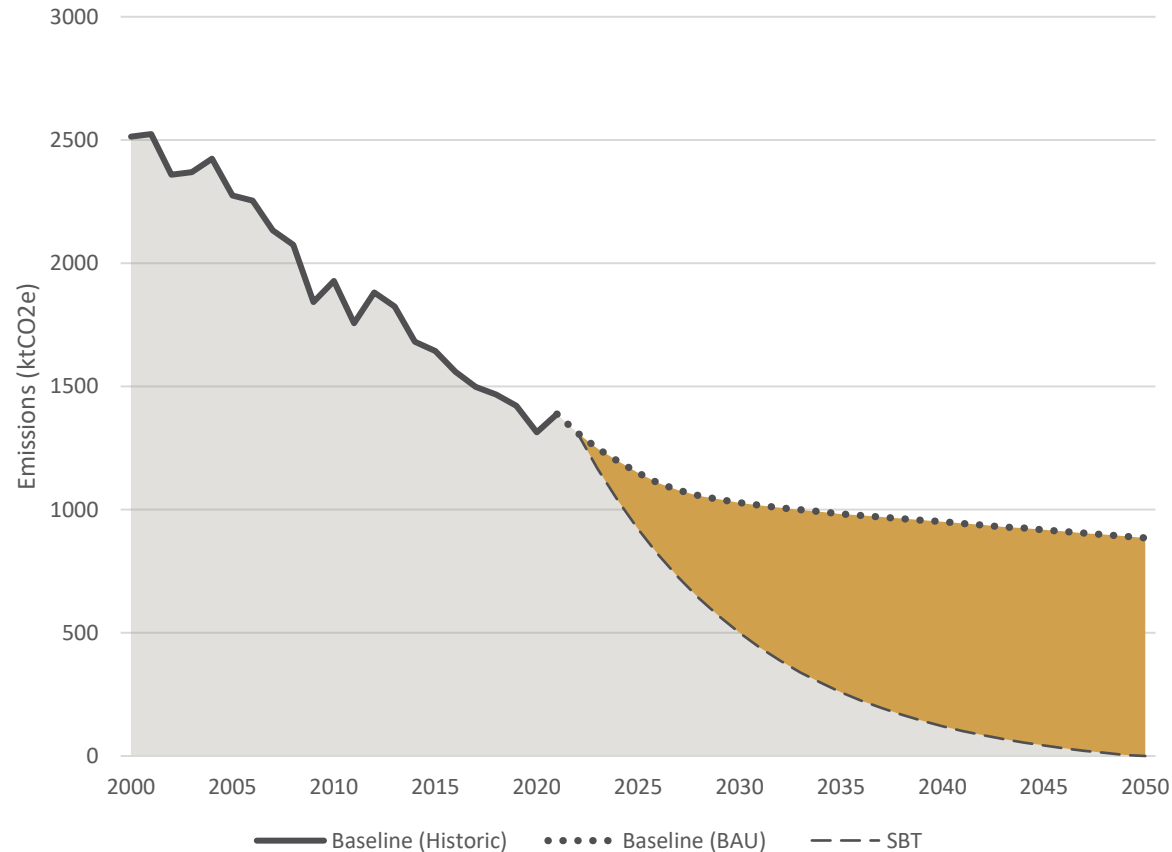
Coventry's 5-yearly Carbon Budgets (Scope 1 and 2)



- At current rates, Coventry will have used its share of the global carbon budget consistent with avoiding dangerous climate change within 9 years



Coventry's 5-yearly Carbon Budgets (Scope 1 and 2)



- To stay within its share of the global carbon budget consistent with avoiding dangerous climate change, Coventry should reduce its emissions by:
- 2025 – a **63%** reduction
- 2030 – a **80%** reduction
- 2035 – a **90%** reduction
- 2040 – a **95%** reduction
- 2045 – a **98%** reduction
- 2050 – a **100%** reduction



Top Ten Most Carbon Effective Options for Coventry

Measure	Carbon Abatement (kt CO ₂ e)
External wall insulation in domestic buildings	1010
Whole house retrofits in domestic buildings	882
Heat pumps in domestic buildings	624
Internal wall insulation in domestic buildings	570
Condensing and insulation measures to boilers and steam piping in industry	533
Solar PV in domestic buildings	520
Improving efficiency of boilers and steam piping in industry	371
Fabric improvements in industrial buildings/warehouses	312
Loft insulation in domestic buildings	287
Passivehaus standards in new retail buildings	280



Next Steps

- You're half-way there (and by 2050 you'll be closer still)!
- You can address the remaining emissions and get to net zero – the options are there already.
- It needs a whole-city approach – everyone and every organization has to do their bit.
- You will need to be innovative in the way you raise finance, and you'll need policy support.
- How many other opportunities do you have to keep £327m a year in the city and create thousands of jobs whilst also tackling social, economic and environmental priorities?



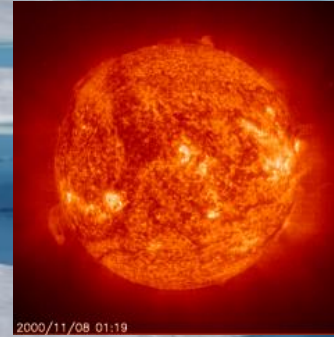
Professor Chris Baines

**UK Leading Independent
Environmental**



COVENTRY

**SUSTAINABILITY &
CLIMATE CHANGE**



Chris Baines

The Earth TODAY

world population

7 billion people

50% in cities



The Earth 2050

world population

10 billion people

70% in cities





FOR LADIES & GENTLEMEN

“THE ROVER”

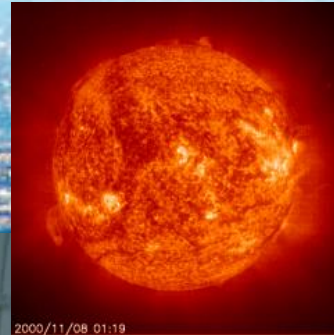
“THE ROVER” HAS SET THE FASHION TO THE WORLD

—THE CYCLIST—
FOR PARTICULARS & PRICE LIST APPLY

J. K. STARLEY & CO.
METEOR WORKS, COVENTRY.

An illustration of a woman and a man riding bicycles on a path. The woman is in the foreground, wearing a long dress and a hat, riding a bicycle. The man is behind her, also on a bicycle. The background shows a house and trees. The illustration is framed by a decorative border.

**Climate change
and
modern life-styles
make
cities stressful**



**MEASURABLE
STRESS
RELIEF
within
FOUR
MINUTES**







QUAGGY BROOK

**L B Lewisham
&
Environment
Agency**



Cheonggyecheon river project, Seoul, South Korea





New York Highline



MADRID



Heygate Estate, L B Southwark











CHRIS BAINES



COMPANION TO
**WILDLIFE
GARDENING**





CHRIS BAINES



COMPANION TO
**WILDLIFE
GARDENING**

**THANKS
FOR
LISTENING**





Bret Willers

Head of Climate Change and Sustainability





Climate Change Strategy

A Sustainable Future for Coventry

15 February 2023



Tackling the causes and consequences of climate change

The One Coventry Plan has three key priorities. The draft Climate Change Strategy is critical to delivering the priority of tackling the causes and consequences of climate change.

'But the strategy's focus on sustainability will also impact much more widely across all of the priorities.'

Feedback from engagement on the One Coventry Plan was used to further develop the detail in the climate change strategy.



Following the 5 Pathways

The Strategy has adopted the 5 development pathways set up by the International Council for Local Environmental Initiatives (I.C.L.E.I) and provides a framework for cities across the world for meeting the UN's 17 Sustainable development goals





CCC has delivered £7m energy efficiency projects in 2021-22

Measure	Quantity
Solar Photovoltaics	765 KWp
Insulation	3,902 m ²
Glazing improvements	1,108 m ²
Pipework insulation	63 m
LED Lights	2,293
Air Source Heat Pumps installed	7
Battery Storage	2,018 KWh



Coundon Court
1st Net Zero School



Gigafactory



More EV charging points than anywhere in UK outside of London



Segregated cycleways



BREEAM Excellent buildings



Solar Farm



Electric Bus City



Coventry Very Light Rail (CVLR)





Environmental
Consultancy



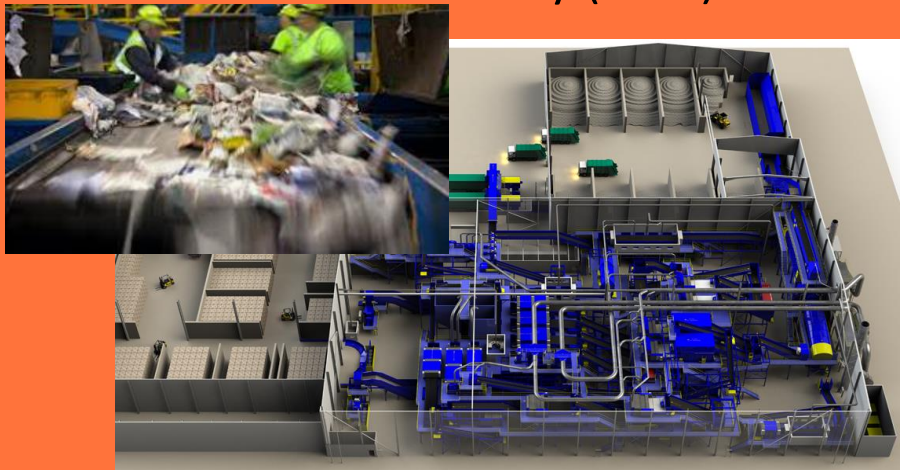
Re-use

Advice & support to SME's

Promoting re-use



The Materials Recovery
Facility (MRF)





Nature Based Development

Warwickshire, Coventry & Solihull Local Biodiversity Action Plan Progress Report



Biodiversity Action Plan & Nature Recovery Plan



Conservation volunteers & Friends of Parks Groups



Monitoring biodiversity



Wildlife corridors



Raising public awareness



Pollinator friendly roadside verges



Project Sherbourne



Planting and Protecting trees





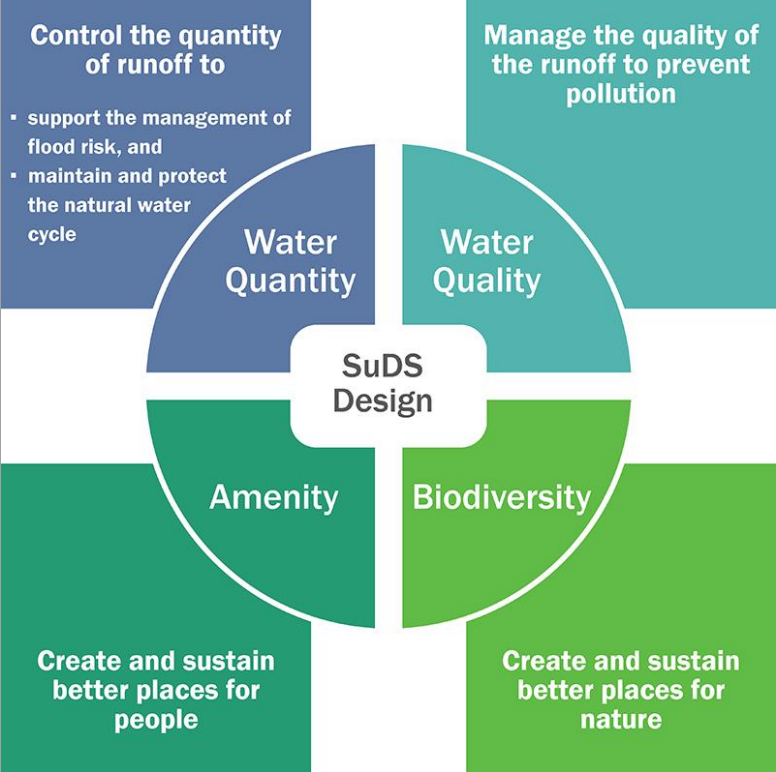
SuDS use of sensitive design



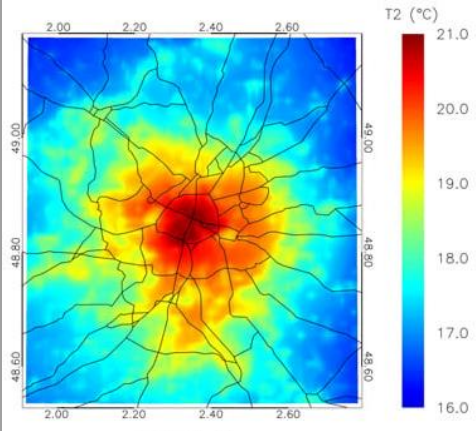
Making homes resilient to flooding



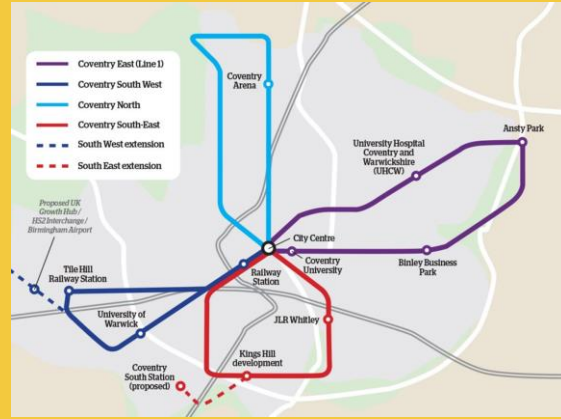
Water Conservation (Grey water systems)



Green Roofs & Living walls



Heat Island Effect



Improved access and options for transport provision

Demand Responsive Transport (DRT)



Food growing projects

Liveable
Accessible
Neighbourhoods



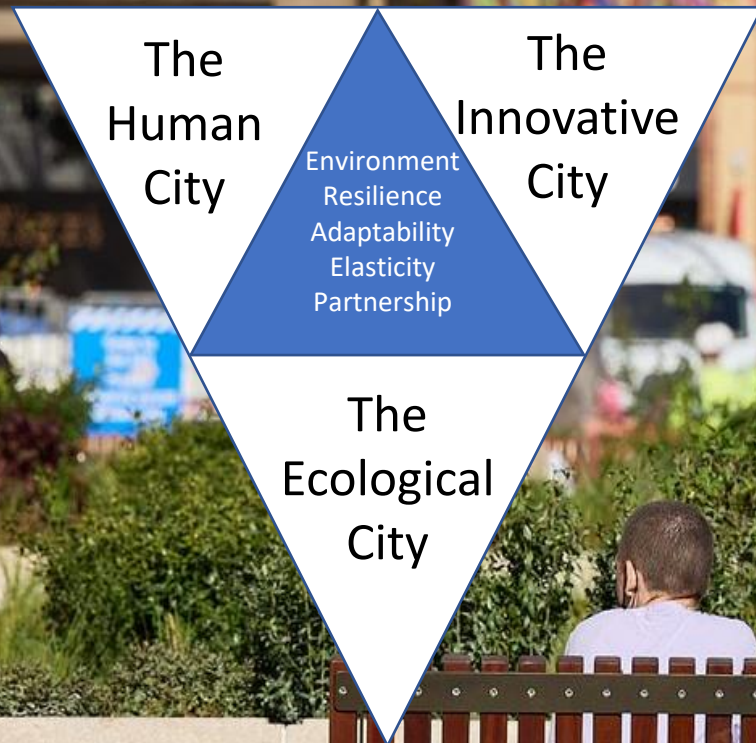
Retrofit - tackling fuel poverty



Air quality monitoring

Combatting food poverty

Green Futures - Creating liveable spaces and enhancing our quality of life



Healthy economy;
Jobs;
Affordable Homes;
Clean Air;
Accessible Green Spaces;
Culture, Heritage;
Quality Design;
Safe Quality facilities;
Learning Opportunities;
Healthy Environments;
Energy Efficient ;
Minimises Waste

Seeking your ideas, thoughts and views for the future

- What are the best ways of engaging with the public?
- How can we best encourage local actions and behaviour change to address the issues?

Future Events

- Join us for a series of public Engagement Sessions over the coming months and interactive Webinars see 'The Lets Talk' pages to book a place:
- 25 March 2023: Cannon Park Shopping Centre
- 03 April 2023: Stoke Library 10am -12noon
- 06 April 2023: Central Library 1pm – 3pm
- 11 April 2023: Bell Green Library 2pm – 4pm
- 13 April 2023: Tile Hill Library 2pm – 4pm

Climate Change Strategy 2023–2030

A Green Future for a Changing City



Our goal

To make Coventry the UK's leading city for environmental change, improving the quality of life for all.



#covclimateaction

Visit our climate change webpages to find out more:

www.coventry.gov.uk/home-energy-warmth/tackling-climate-change/2

www.coventry.gov.uk/climatechange/pathway

Acting on Climate



ACTING on CLIMATE



EARTHSTORIES

&

YOUTH CLIMATE ASSEMBLY

Introductions...



Dr Rachel Turner-King, Associate Professor in Creativity, Performance and Education in partnership with Dr Bobby Smith, Associate Professor in Theatre and Performance Studies.

FLUX led by Charlotte Hale-Smith, an arts practitioner specialising in STEAM education.



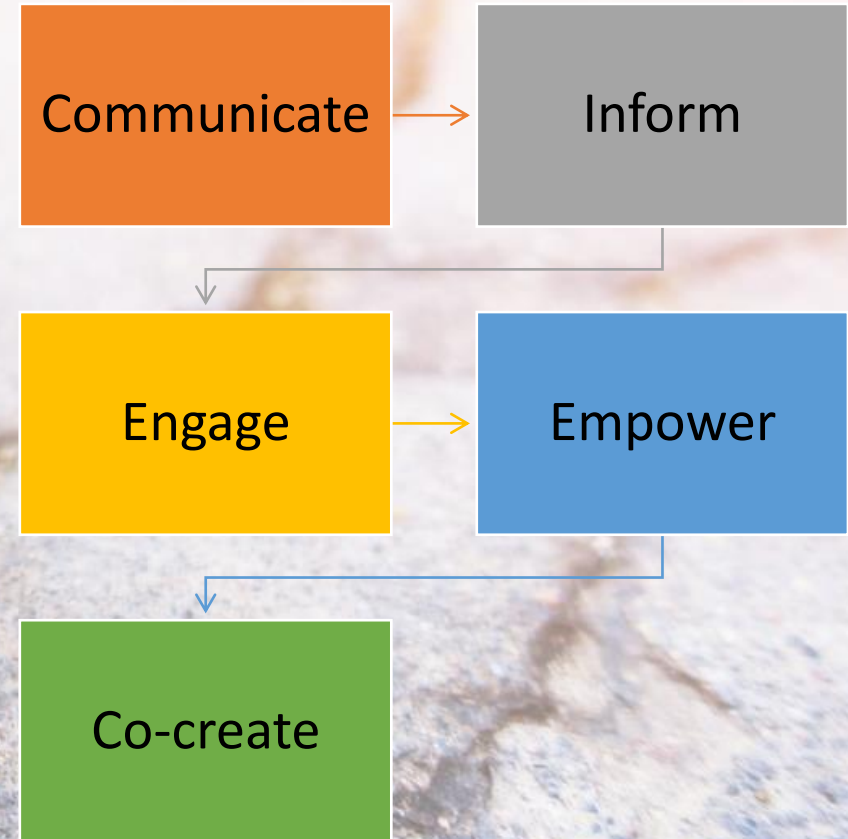
Sarah Shalgosky – Warwick Arts Centre's MEAD gallery Curator

MA students: Ce, Greta, Jenny, Prada, Rowan, Susanna and Sylva.

Coventry's Climate Strategy directly affects citizens' futures. It aims to:

Raise awareness of the issues across the city.

Encourage grassroots activities.



THE ARTS HELP FIND & TELL THE STORY

Whose stories are we listening to?

‘We need to wrap up all the facts and stats in and around story so that people will want to listen and ultimately learn something new’ (British Science Association, 2018).

When used skilfully, care-fully and responsively, arts-based teaching and learning can support and enhance engagement in the complexities of climate change and environmental education.



Who has a voice?
Who is listening?
Who gets heard?



What's *your* connection to the land around you?

What is the relationship between the natural world and the places we love?



The people we care about.

How does our environment connect us to our pasts?

Our futures?

Our friends?

Our families?

Our pain, grief, and pangs of joy?















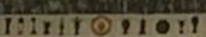


STAND



EVERY SINGLE ONE OF US LOVES ALEX FERGUSON

GREATEST OF ENGLISH FOOTBALL



WE'VE WON IT ALL

MANCHESTER UNITED
BEST MAN UNITED



"IT'S GLORY AND HONOUR" THE GREAT MAN HE SAID



中國頂心真武廟

萬古真宮稱廣濟
重修寶蹟繼長春

安福申路
雙年村

NO PARKING

NO PARKING

萬古真宮







UNIVERSITY OF
THE SOUTH CHINA SEA

聯合





Finding 1 – There’s no “one size fits all” approach to engagement.

“I’ve got bigger things to worry about than climate change”

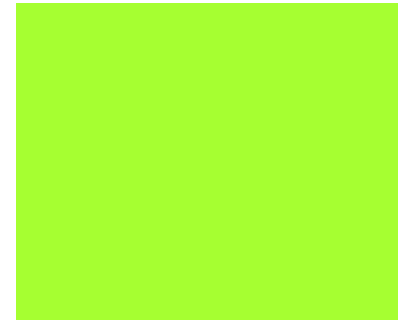
Friendships

Exam pressures

Cost of Living Crisis

In other words – there’s a wide spectrum of difference between Greta Thunberg/youth climate activists and many 14 year olds.

PATHWAY 5: EQUITABLE DEVELOPMENT





Finding 2: Resist starting with facts and figures. Cultivate their voices, their stories and their connections.

We found that arts-based approaches provided a meaningful context for exploration and engagement.



Finding 3: The arts helps us to respond to 'eco-anxiety' through playful experimentation.

PATHWAY 4: RESILIENT DEVELOPMENT



Finding 4: Explore and respond imaginatively and creatively to already-existing green spaces.

**PATHWAY 3 and 5:
NATURE BASED DEVELOPMENT
and
EQUITABLE DEVELOPMENT**



A photograph of a garden scene. In the foreground, there are several tall, green, blade-like plants. To the right, a black plastic pot contains some plants and a small blue and red object. The background shows a mix of green grass and brown soil. The text "Earthstories.world" and "Process Snapshot" is overlaid in white, bold font in the center of the image.

Earthstories.world
Process Snapshot

Next Steps ...

Final website launching SPRING 2023

Please visit: <https://earthstories.world/>

Data analysis, report writing and seeking funding to scale up our project

Got feedback, questions or requests?

Please email:

rachel.turner-king@warwick.ac.uk

Flux@movingscience.co.uk

Got nice things to say or share?

Twitter: @RachelTurnerKi1

Please tweet us! #earthstoriesarts



Workshop sessions



Low emission development

Low emissions and new economic opportunities



Circular development

Recycling and reusing our resources



Nature-based development

Protecting habitats and our city's wildlife



Resilient development

Coping with the consequences of climate change



Equitable development

Addressing the effects of climate change on vulnerable low-income families





Thank you



WONDERFUL ON TAP





For more information, visit

www.coventry.gov.uk/climatechange

