

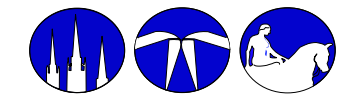
Coundon Cycle Path Tour



Information and contact address:-



cyclecoventry@coventry.gov.uk



COVENTRY SOCIETY

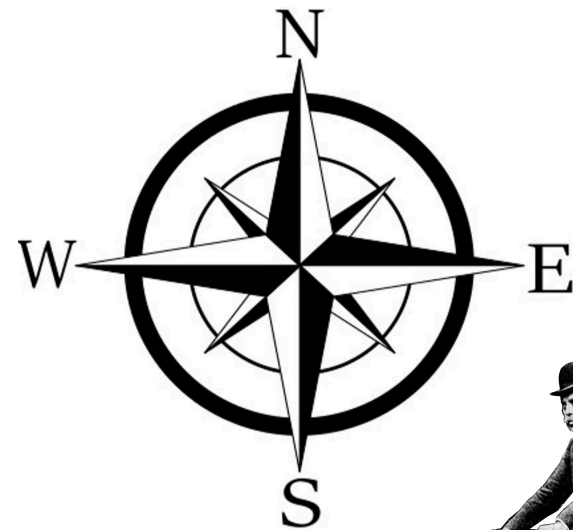
www.coventrysociety.org.uk
e.mail: info@coventrysociety.org.uk



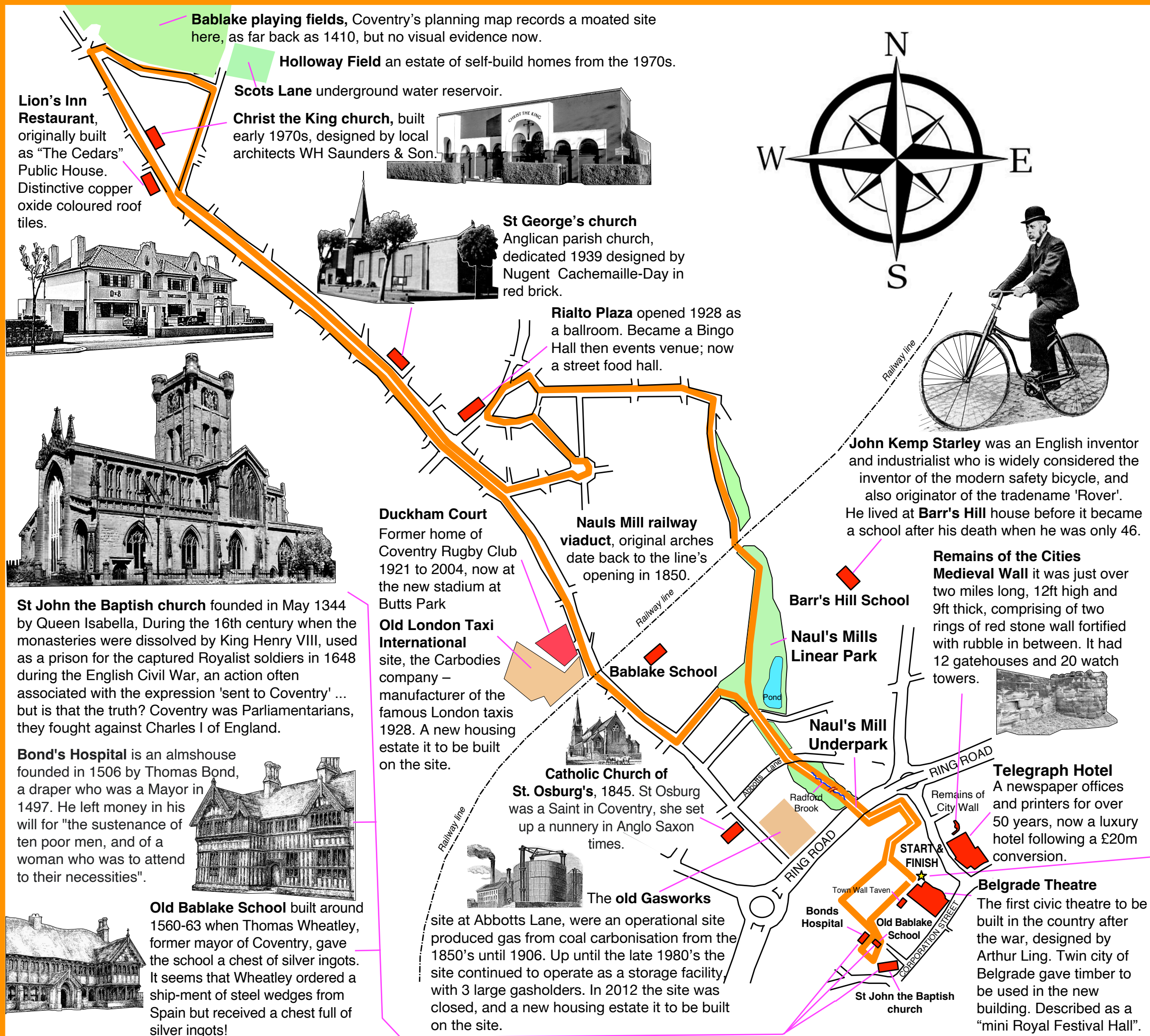
**The Tour
Start & Finish
by this mural**

Ira Aldridge Mural
Shakespearean actor and theatre manager regarded as the first Black American tragedians along with James Hewlett. Aldridge was born in New York City in 1807 and became manager of Theatre Royal Coventry in 1852. He extensively toured Europe and died suddenly in 1867. Mural was painted by Dreph as part of 'In Paint We Trust project'. The mural was based on an 1830 portrait by Henry Perronet Briggs, depicting Ira Aldridge as Othello.

Designed by Paul Maddocks



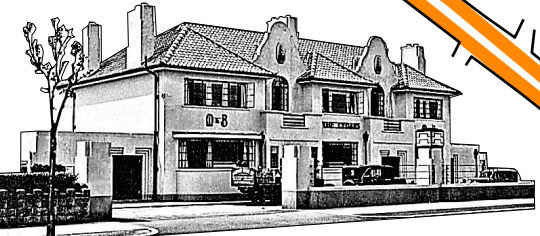
John Kemp Starley was an English inventor and industrialist who is widely considered the inventor of the modern safety bicycle, and also originator of the tradename 'Rover'. He lived at **Barr's Hill** house before it became a school after his death when he was only 46.



Bablake playing fields, Coventry's planning map records a moated site here, as far back as 1410, but no visual evidence now.

Holloway Field an estate of self-build homes from the 1970s.

Lion's Inn Restaurant, originally built as "The Cedars" Public House. Distinctive copper oxide coloured roof tiles.



Scots Lane underground water reservoir.

Christ the King church, built early 1970s, designed by local architects WH Saunders & Son.



St George's church Anglican parish church, dedicated 1939 designed by Nugent Cachemaille-Day in red brick.

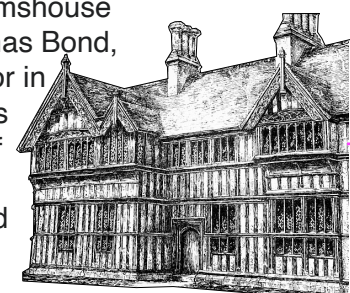


Rialto Plaza opened 1928 as a ballroom. Became a Bingo Hall then events venue; now a street food hall.



St John the Baptist church founded in May 1344 by Queen Isabella, During the 16th century when the monasteries were dissolved by King Henry VIII, used as a prison for the captured Royalist soldiers in 1648 during the English Civil War, an action often associated with the expression 'sent to Coventry' ... but is that the truth? Coventry was Parliamentarians, they fought against Charles I of England.

Bond's Hospital is an almshouse founded in 1506 by Thomas Bond, a draper who was a Mayor in 1497. He left money in his will for "the sustenance of ten poor men, and of a woman who was to attend to their necessities".



Old Bablake School built around 1560-63 when Thomas Wheatley, former mayor of Coventry, gave the school a chest of silver ingots. It seems that Wheatley ordered a ship-ment of steel wedges from Spain but received a chest full of silver ingots!



Duckham Court Former home of Coventry Rugby Club 1921 to 2004, now at the new stadium at Butts Park

Old London Taxi International site, the Carbodies company – manufacturer of the famous London taxis 1928. A new housing estate it to be built on the site.

Nauls Mill railway viaduct, original arches date back to the line's opening in 1850.

Barr's Hill School

Nauls Mills Linear Park

Nauls Mill Underpark

Bablake School

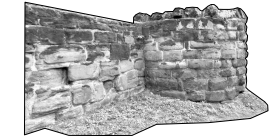
Catholic Church of St. Osburg's, 1845. St Osburg was a Saint in Coventry, she set up a nunnery in Anglo Saxon times.



The old Gasworks

site at Abbots Lane, were an operational site produced gas from coal carbonisation from the 1850's until 1906. Up until the late 1980's the site continued to operate as a storage facility, with 3 large gasholders. In 2012 the site was closed, and a new housing estate it to be built on the site.

Remains of the Cities Medieval Wall it was just over two miles long, 12ft high and 9ft thick, comprising of two rings of red stone wall fortified with rubble in between. It had 12 gatehouses and 20 watch towers.



Telegraph Hotel A newspaper offices and printers for over 50 years, now a luxury hotel following a £20m conversion.

Belgrade Theatre The first civic theatre to be built in the country after the war, designed by Arthur Ling. Twin city of Belgrade gave timber to be used in the new building. Described as a "mini Royal Festival Hall".

Bonds Hospital

Old Bablake School

St John the Baptist church