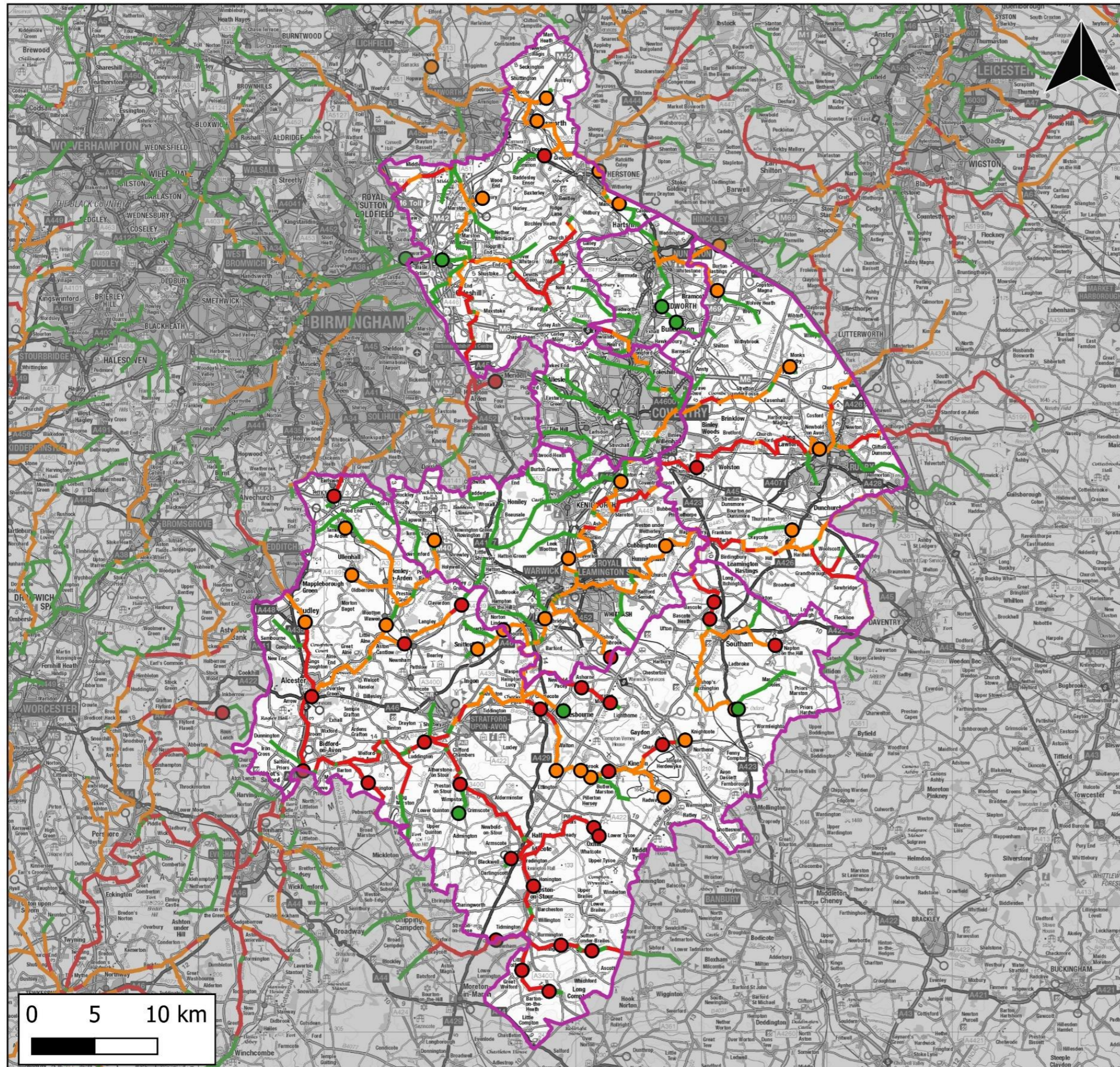


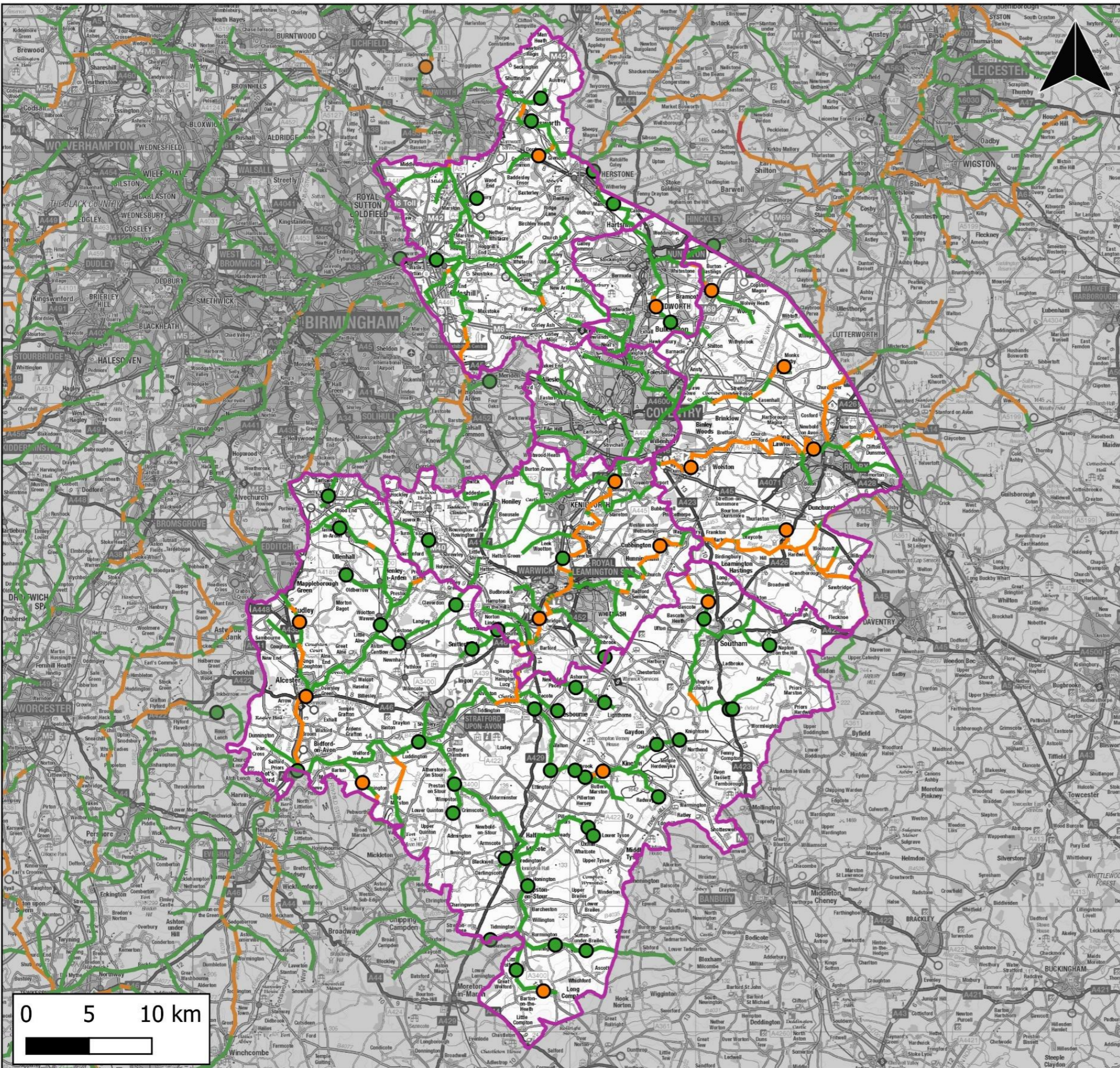
Ammonia Deterioration

- Warwickshire Study Area
- Deterioration at WwTW Outfall
 - No Deterioration
 - Deterioration <10%
 - Deterioration >10%
- Deterioration in Watercourse
 - No Data
 - No Deterioration
 - Deterioration <10%
 - Deterioration >10%

Contains Ordnance Survey data © Crown copyright and database right 2024. Contains public sector information licenced under the Open Government Licence v3.0

Source:
KMQ-JBAU-XX-XX-MX-EN-0020-S0-P01
Ammonia_Deterioration
Date Created: 28.06.2024





BOD Deterioration

- Warwickshire Study Area
- Deterioration at WwTW Outfall
 - No Deterioration
 - Deterioration <10%
 - Deterioration >10%
- Deterioration in Watercourse
 - No Data
 - No Deterioration
 - Deterioration <10%
 - Deterioration >10%

Contains Ordnance Survey data © Crown copyright and database right 2024. Contains public sector information licenced under the Open Government Licence v3.0

Source:
 KMQ-JBAU-XX-XX-MX-EN-0021-S0-P01
 BOD_Deterioration
 Date Created: 28.06.2024

Phosphate Deterioration

- Warwickshire Study Area
- Deterioration at WwTW Outfall
 - No Deterioration
 - Deterioration < 10%
 - Deterioration > 10%
- Deterioration in Watercourse
 - No Data
 - No Deterioration
 - Deterioration < 10%
 - Deterioration > 10%

Contains Ordnance Survey data © Crown copyright and database right 2024. Contains public sector information licenced under the Open Government Licence v3.0

Source: KMQ-JBAU-XX-XX-MX-EN-0022-S0-P01 Phosphate_Deterioration
Date Created: 28.06.2024

