

# The London Taxi



**TX4** Euro 5





**Established in 1919, The London Taxi Company is Britain's leading manufacturer of fully accessible purpose-built taxis, universally acknowledged for creating the famous 'black cab', now an international icon.**

The first-ever black cab, the classic FX3, left the company's Coventry factory in 1948. Since then, more than 130,000 vehicles have rolled off the production line and our distinctive, reliable taxis can be seen on the streets of cities and towns across the United Kingdom and in more than 60 countries around the world.

We pride ourselves on the instantly recognisable, robust design of our hand-built vehicles, which are renowned for their longevity and ability to cover hundreds of thousands of miles during a lifetime of use. We continue to invest significantly in developing the world's only fully accessible purpose-built taxi, still made by hand by our experienced engineering team.

The latest incarnation of the black cab is the **TX4** (Euro 5).







FX3 1948 - 1959

# TX4 Style & Elegance

Our latest model, the **TX4** (Euro 5) embodies the traditional qualities that make **The London Taxi** a modern day icon.

Drivers across the UK benefit from its manoeuvrability, purpose-built strength, taxi-specific design features and ultra-low running costs. Passengers enjoy a spacious and private compartment, a superior seating position and unrivalled accessibility, for both the elderly and disabled.

The development of **TX4** included more than 1,000,000 miles of specific taxi duty cycle testing and we are confident that no other taxi is as robust as the **TX** series – it is cleaner, more efficient, smoother and a more comfortable ride than ever before.

Introducing the **TX4** Style and the **TX4** Elegance.





# Driving Performance

We understand your business, so the unique design of **The London Taxi** reflects your commercial needs, as well as ensuring the driver is in full control and in optimum comfort.

Because the **TX4** is purpose-built, it has some unique features that include:

## Driver Benefits

### Interior

- *Enhanced driving position improves visibility and confidence*
- *Separate independently lockable compartments*
- *Ergonomic driver's seat with arm-rest and lumbar support*
- *437 litres of luggage space (plus additional luggage retention system)*
- *Super-tough one piece centre division with integral payment tray and chip and PIN slot*
- *Improved in-car entertainment system (with DAB and MP3 available)*
- *Improved air conditioning*
- *Voice intercom with central speaker and microphones*

### Mechanical

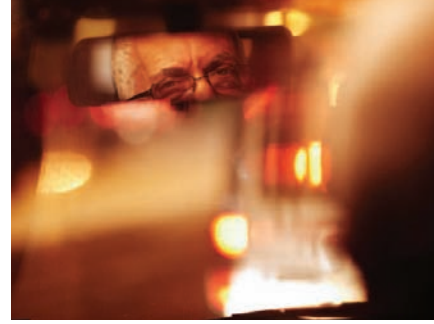
- *Euro 5 compliant engine - greener, cleaner and still delivering high torque at low speed*
- *ABS all-round braking system*
- *Emergency Brake Assist System*
- *25-foot turning circle makes light work of customer pick-up, heavy congestion and tricky parking*
- *Ultra-strong steel chassis and bolt-on panels dramatically reduce repair costs/down time*
- *Specially designed tyres with extra wide kerb protection strips*

### Exterior

- *Unmistakable silhouette means you'll always stand out from the crowd*







### Passenger Benefits

- Improved air conditioning
- Voice intercom speaker and microphones
- Safe, secure accommodation for up to five passengers
- Integral fold-down ramp aids access and departure
- Secure wheelchair retention system
- Unique swivel seat assists customers with reduced mobility
- Adjustable centre rear seat belt harness for children (18kg upwards)
- Contrasting grab handles and seat edges assists partially-sighted passengers
- Swing door mechanism for ease of use and greater visibility for traffic upon entry/exit
- Induction loop for those with impaired hearing
- Easy to use intermediate step to aid access for those with limited mobility
- Three-point seat belts fitted to all seats
- Driver and passenger head restraints provide passive protection and reduce risk of injury
- Floor, roof and door handle lights with puddle lighting for safer, easier entry/exit







## Customer Choice

From its instantly recognisable silhouette, comfort, space, privacy and ease of access to the professionalism and knowledge of the driver, it is easy to see why customers prefer to hail **The London Taxi** and why the London Taxi Service is consistently voted the best in the world.

The unique design and layout of the **TX4** means that customers can sit face-to-face and enjoy each other's company, as well as the journey. They are free to stretch their legs, work on the move or just sit back and enjoy the scenery from the excellent seating position.

Passengers are able to communicate clearly with the driver via the intercom system, or enjoy total privacy and security. They can even change their own environment using the passenger climate controls.





# Accessible to All

**The London Taxi** is designed to cater for a wide range of passengers.

Integral ramps allow easy access, with a securing mechanism for wheelchair users providing stability during the journey. The unique nearside swivel seat, used in conjunction with the intermediate step, makes for easy access for passengers with limited mobility.

Our cabs also have special features designed for the partially sighted and hearing-impaired, as well as low floors and high seating positions - providing excellent accessibility, increasing your potential customer base and fitted as standard.







# Engineering Excellence

At the heart of our custom-designed taxi is a purpose-built engine mounted into the trusted safety of a steel chassis.

The 2.5 litre diesel VM Motori is clean, quiet and powerful, without compromising on reliability or economy, and **Euro 5 specification** has improved these features.

It delivers high torque at low speeds, so you can pull away from a standing start effortlessly and quickly.

The common rail multi-stage injection technology provides power when you need it, and the electric engine management system optimises driving performance and responsiveness. And you can choose from either 5-speed automatic or 5-speed manual transmissions.

All-round coil suspension with anti-roll control ensures improved handling for the driver and exceptional comfort for passengers.

**TX4 (Euro 5) comes with a 3 year (up to 100,000 miles) comprehensive vehicle warranty. For added piece of mind, the core engine has an additional 3 year unlimited mileage warranty.**

Our extensive Approved Service Dealer network, of more than 60 trained professional garages across the UK, means that there should always be someone on hand to keep you, your vehicle and your business running smoothly.



# TX4 Style & Elegance

## Options & Specification

	Style	Elegance
<b>Exterior</b>		
Radio aerial	■	■
Tinted glass	■	■
Black door mirrors	■	
Colour-coded door mirrors		■
Black (solid) paint	■	■
Coloured (solid) paint	○	○
Metallic paint	□	○
Black energy absorbing bumpers	■	
Fully colour-coded energy-absorbing bumpers		■
Black radiator grille and mesh with The London Taxi Company badge	■	
Chrome radiator grille and mesh with The London Taxi Company badge		■
Black door handles	■	
Chrome door handles		■
Front fog lights		■
Twin rear fog and reversing lights	■	■
High level third brake light	■	■
Colour-coded side rubbing strips		■
Black number plate plinth	■	
Chrome number plate plinth with The London Taxi Company badge		■
Indicators front, clear lens, clear bulb (until lit)	■	■
Side repeaters, clear lens	■	■
Rear light clusters, clear lens	■	■
Rear wash/wipe (with single speed intermittent)	■	■
<b>Interior</b>		
Black and grey instrument surround	■	
Dark wood style instrument surround		■
Boot light	■	■
Driver's door stowage pocket	■	■
Electric windows front and rear	■	■
Heated and electrically adjustable door mirrors	■	■
Integral cup holder	■	■
Stowage net	■	■
Carpeted passenger compartment	■	■
Driver's seat armrest and lumber support	■	■
<b>Electrical</b>		
Delay driver's compartment light		■
PATS vehicle immobiliser with radio key	■	■
Air conditioning (front and rear)		■

	Style	Elegance
<b>Electrical continued</b>		
JVC R301 - MP3/CD-RW/FM/AM/LW RDS tuner with front aux	■	
JVC DB101 - DAB/MP3/CD - RW/FM/AM/LW RDS tuner with front aux		■
Removable coded ICE front panel	■	■
Door warning indicator	■	■
'Wheelchair seat belt not secured' warning indicator	■	■
Remote doors' or door central locking	■	■
One-touch opening/lowering front windows		■
Low level driver's illumination		■
'Lights' on warning alarm	■	■
<b>Passenger</b>		
Head restraints	■	■
Rear interior light	■	■
Induction loop	■	■
Swivel seat	■	■
Patterned cloth passenger seats	■	■
5 x 3 point rear seat belts	■	■
Adjustable centre rear seat belt harness for children	■	■
Integrated fold-away ramp	■	■
Yellow visibility strip and seat edges	■	■
Wheelchair restraint system	■	■
High visibility grab handles	■	■
<b>Driver</b>		
Patterned cloth driver's seat	■	■
Driver's seat head restraint	■	■
Heated rear window (with timed cut out)	■	■
Power-assisted steering	■	■
12V power socket	■	■
Digital clock	■	■
<b>Mechanical</b>		
Taxi tyres	■	■
Anti-lock braking system	■	■
Emergency Brake Assist System	■	■
<b>Options</b>		
Brushed aluminium instrument surround		□
Alloy wheels		□
Special colour body paint	□	□

- Standard
- Option at no cost
- Option at extra cost

Style

Elegance

TX4 Euro 5





**Engine** - VM Motori 2499cc R425 DOHC four cylinder diesel, 16 valve twin overhead camshaft, direct injection turbo and intercooled. Bore/stroke 92mm x 94mm, compression ratio 17.5:1. Max power 74 kW at 4,000 rpm. Max torque 240 NM at 1,800 rpm. Toothed belt drive to overhead camshafts and high pressure fuel supply pump. Electronically controlled common rail diesel fuel system, electronic engine management and cold start glow plugs. Passive anti-theft system (PATs). Electrically driven cooling fan.

**Manual Gearbox** - Eaton 5 speed (FSO 2405 A) all synchronmesh floor shift. Hydraulic clutch operation. Ratios: 1st 4.08, 2nd 2.29, 3rd 1.47, 4th 1.00, 5th 0.73, Reverse 3.79.

**Automatic Gearbox** - 5 speed electronically controlled with floor mounted cable operated shift lever. Transmission cooler integral with radiator. Ratios: 1st 3.00, 2nd 1.67, 3rd 1.00, 4th 0.75, 5th 0.67, Reverse 2.21.

**Rear Axle** - Semi floating with hypoid bevel gears ratio 4.1:1.

**Suspension and Steering** - Independent, double wishbone front suspension with coil springs and telescopic dampers. Coil rear springs with trailing arms and panhard rod. Power assisted steering. Maximum turning distance between walls 8.53m (28ft). 5JKx16 wheels with 175R16C Q speed rating (6PR) tyres. One piece wheel covers.



**Brakes** - Servo assisted diagonal split hydraulic system with electronically controlled Anti-lock Braking System (ABS). Ventilated front discs 278mm (10.9in.) dia. with four piston callipers. Self adjusting rear drum brakes 254x70mm (10x2.75in.). Cable operated handbrake to rear drums. Emergency Brake Assist System, initiated by brake pedal force & speed parameters.

**Body** - All steel, four door body mounted on separate cruciform steel chassis. Bolt on front panels, front and rear wings. Electrocoat body protection, wax injected body and chassis. Central division between driver's and passenger's compartment with attack resistant acrylic screen.

Foam reinforced front and rear bumpers mounted on steel armatures. Central door locking (ignition and radio key). Automatic motion sensitive driver and passenger compartment door locks. Tinted glass, laminated windscreen and heated rear screen. Electrically operated windows in front and rear doors. Electrically heated and adjustable door mirrors.

**Service Interval** - 12,000 miles (20,000km)

Max permitted gross vehicle weight                    2,520 Kg  
 Approximate kerb weight                                    2,020 Kg  
 (may vary according to equipment)



### TX4 Fuel Consumption: 2499cc Diesel Engine

Transmission	5 Speed Manual		5 Speed Automatic	
	mpg	litres/100km	mpg	litres/100km
- Urban	27.7	10.2	25.7	11.0
- Extra Urban	42.8	6.6	40.4	7.0
- Combined	35.3	8.0	33.6	8.4
CO <sub>2</sub> Emissions (g/km)	209		222	
Regulated Emissions Standard	Euro 5		Euro 5	
Noise Level dB(A) moving	73.8		71.4	

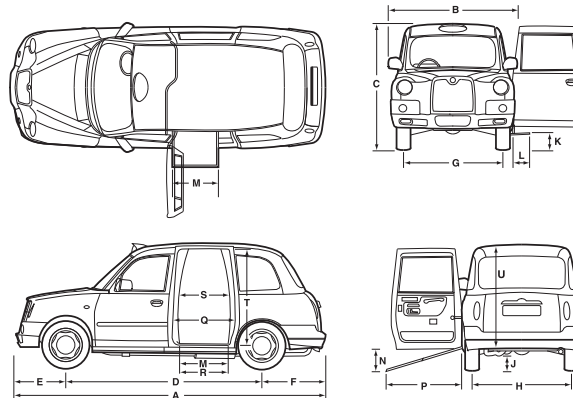
Source: DETR tests

### TX4 Dimensions

#### Principal Dimensions (mm)

A Length	4,580	L Step depth	280
B Width (over mirrors)	2,036	M Step width	700
C Height	1,834	N Sill height	370
D Wheelbase	2,886	P Ramp extension	1,350
E Front overhang	764	Q Door width (max)	880
F Rear overhang	930	<b>Wheelchair door access:</b>	
G Front track	1,422	R Floor level width	700
H Rear track	1,482	S Waist level width	780
J Ground clearance	134	T Height (door seal to ramp)	1,350
K Step height	208	U Height inside vehicle	1,400

**Note:** The measurements shown here are nominal and some variation will occur between vehicles. Vehicle, step and sill heights shown are with the vehicle at kerb weight.



**Important Notice:** LTI Ltd, trading as The London Taxi Company is constantly seeking ways to improve the specification, design and production of its vehicles, and alterations take place continually. Whilst every effort is made to produce up to date literature, this brochure should not be regarded as an infallible guide to current specifications, nor does it constitute an offer for the sale of any particular vehicles. TM - TX4, the taxi sign and The London Taxi Company logo are all trademarks of LTI Limited. The TX4 shape is a registered design. © LTI Limited 03/2012.



# Colour and Trim

## TX4 (Euro 5) Paint Finishes

Featured with colour-coding and chrome grille surround



Raven Black - Solid



Alpine White - Solid



Aero Blue - Metallic



Storm Grey - Metallic



Nightfire Red - Metallic



Charcoal Grey - Metallic



Oxford Blue - Metallic



Quartz Silver - Metallic



Spice Bronze - Metallic



Ocean Blue - Metallic



Godiva Blue - Solid

Additional colours available on request:

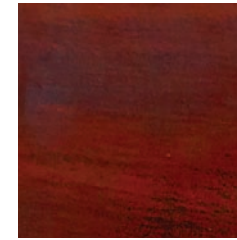


Sunburst Yellow - Solid



Sherwood Green - Solid

## Dashboard Fascia Trims



Dark Wood  
Standard on Elegance model

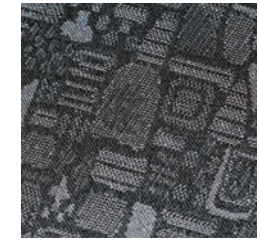


Grey / Black  
Standard on Style model



Brushed Aluminium  
Option on Elegance model

## Interior Trim



Patterned Cloth

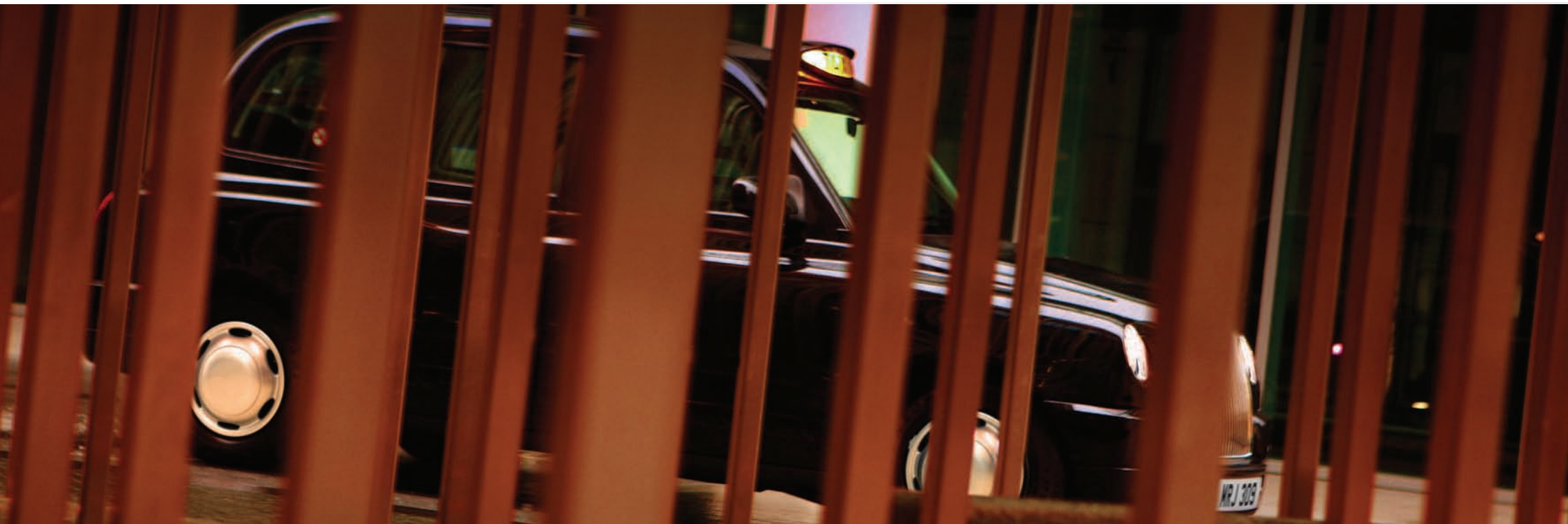




# All part of the service

As well as manufacturing the world's only fully accessible purpose-built hackney carriage, **The London Taxi Company** also sells the **TX4** direct to customers through retail outlets, spanning the UK from Edinburgh in the North, to our flagship in the heart of London. We have developed and work closely with an extensive network of more than 60 Approved Service Dealers, who help provide our customers with an essential after-sales, service and support network.

Our own retail outlets are fully equipped with parts and service departments, offering a great range of deals and offers, as well as giving you the opportunity to view or test-drive our new or used vehicle stocks.



## Retail outlets:

39-41 Brewery Road  
**LONDON**  
N7 9QH  
t: +44 (0)20 7700 0888  
e: london@london-taxis.co.uk

Holyhead Road  
**COVENTRY**  
CV5 8JJ  
t: +44 (0)2476 572 040  
e: coventry@london-taxis.co.uk

Unit 3a, Bankfield Industrial Estate  
Kitson Road  
**LEEDS**  
LS10 1NT  
t: +44 (0)113 388 8600  
e: leeds@london-taxis.co.uk

Broughton Street, Cheetham  
**MANCHESTER**  
M8 8NN  
t: +44 (0)161 831 3434  
e: manchester@london-taxis.co.uk

2 Dunnet Way, East Mains Industrial Estate  
Broxburn, West Lothian  
**EDINBURGH**  
EH52 5NN  
t: +44 (0)1506 864 670  
e: edinburgh@london-taxis.co.uk

Unit 2, Roseberry Court  
Ibrogx Business Park, Govan  
**GLASGOW**  
G51 2JR  
t: +44 (0)141 445 4805  
e: glasgow@london-taxis.co.uk

**Registered Office:**  
LTI Limited, trading as  
The London Taxi Company  
Holyhead Road  
Coventry CV5 8JJ  
England  
t: +44 (0)24 7657 2000  
e: enquiries@london-taxis.co.uk

[www.london-taxis.co.uk](http://www.london-taxis.co.uk)  
Registered in England No. 382553